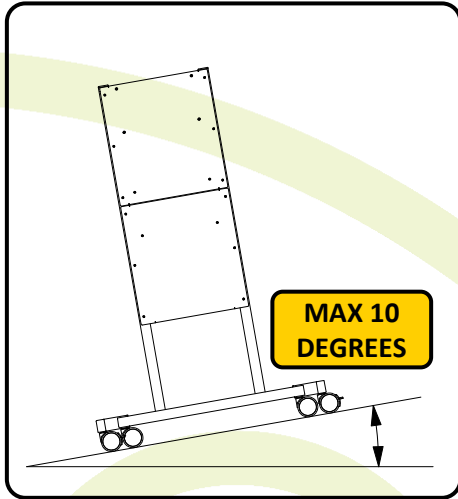
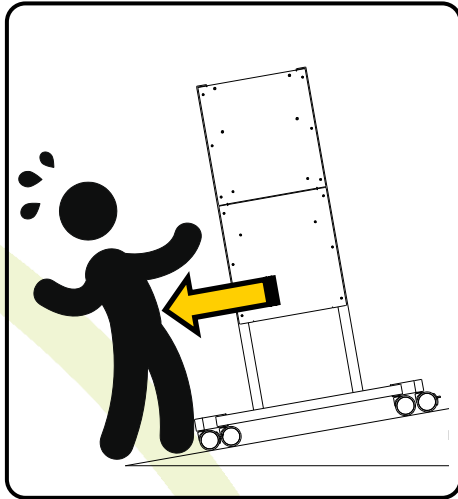


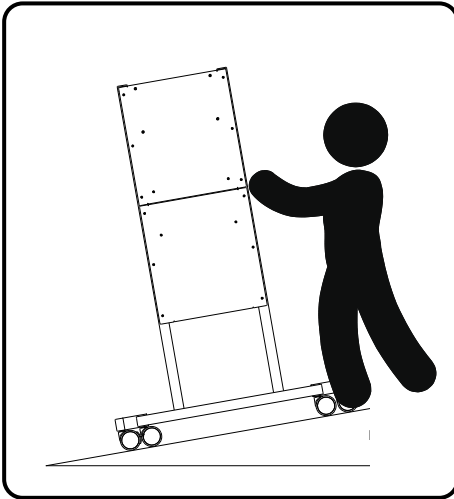
**MOBILE STAND LWB**  
for the BalanceBox® 400 and 400H



**WARNING MAXIMUM SLOPE**



**WARNING DO NOT PULL DOWN  
SLOPE**



**STAY ABOVE CART WHEN MOVING  
DOWN SLOPE**



**CAUTION**

This cart is intended for use with a BalanceBox® height adjustable mount and flat screen or touchscreen TV or Interactive whiteboard weighing not more than:

**200 pounds (90 kg).**

Use with other products may result in instability causing possible injury.



**CAUTION**

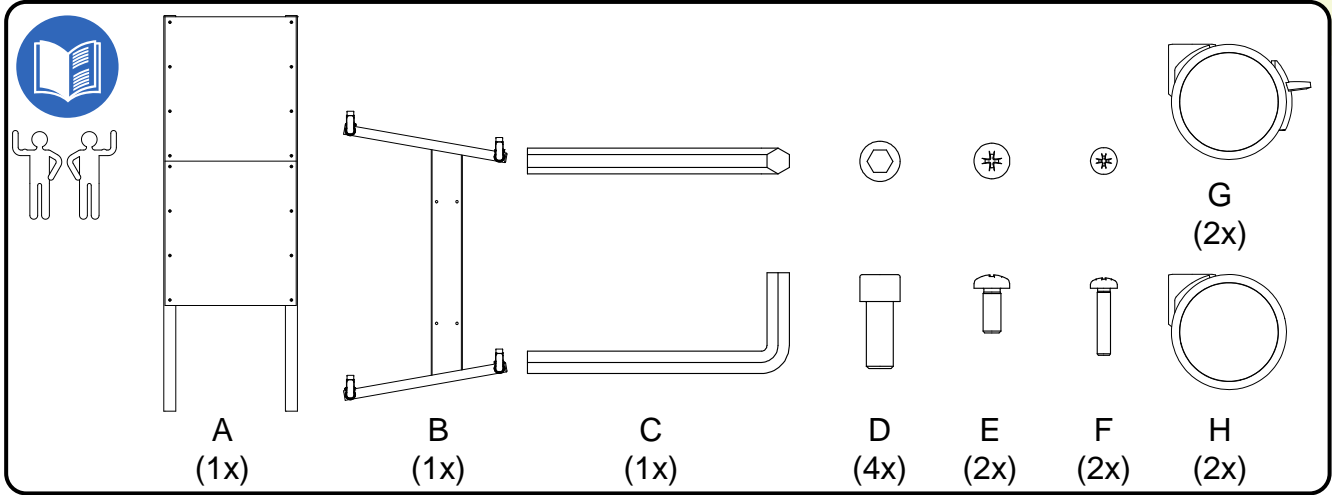
“This cart is Intended for use only with the maximum weights indicated. Use with products heavier than the maximum weights indicated may result in instability causing possible injury.”

**BalanceBox®**  
HEIGHT ADJUSTABLE MOUNTS

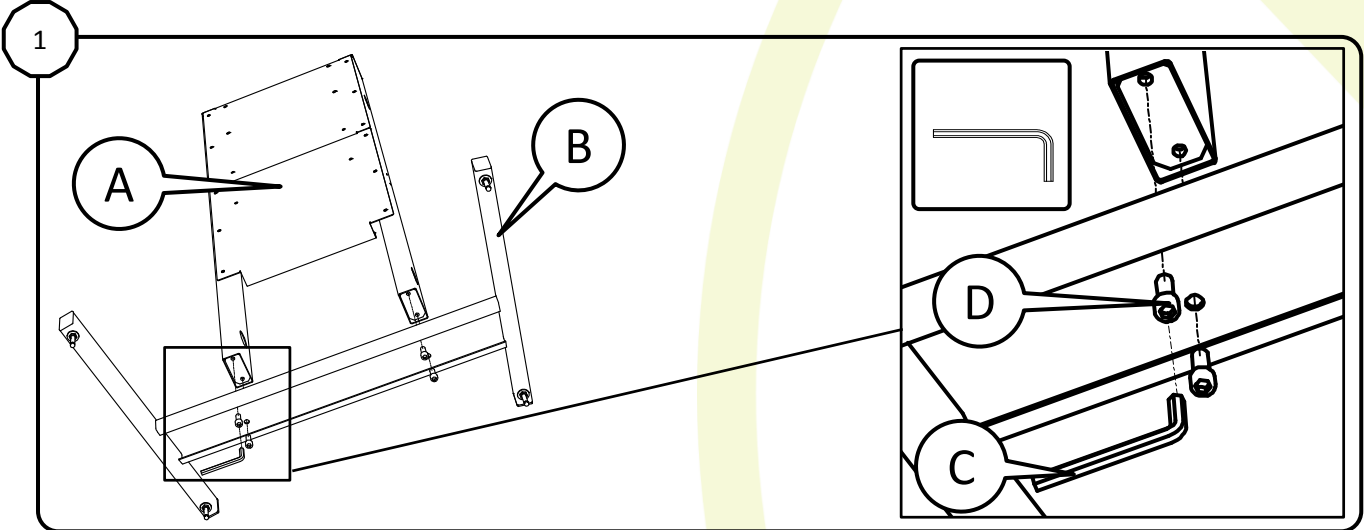
**MOBILE STAND LWB**  
for the BalanceBox® 400 and 400H  
Installation manual



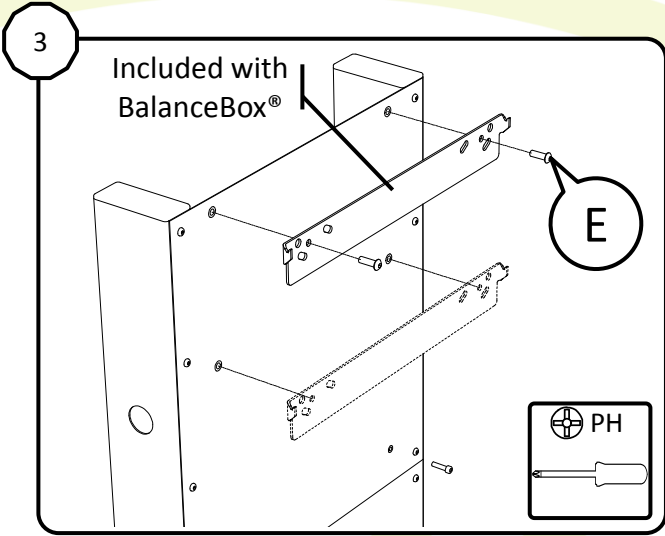
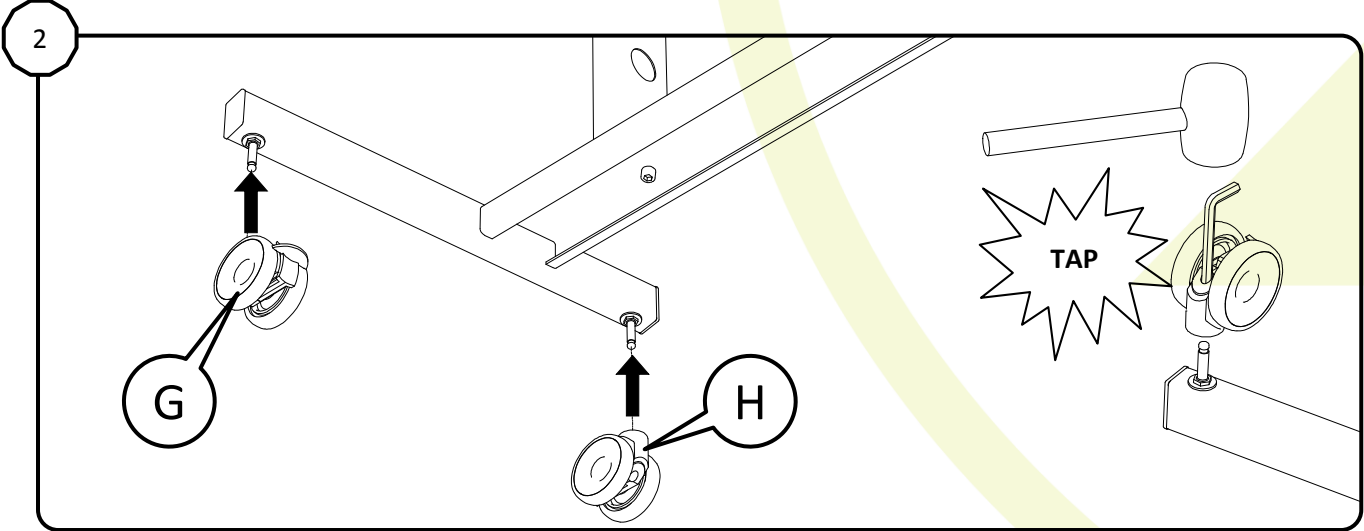
partnr: 902831-02



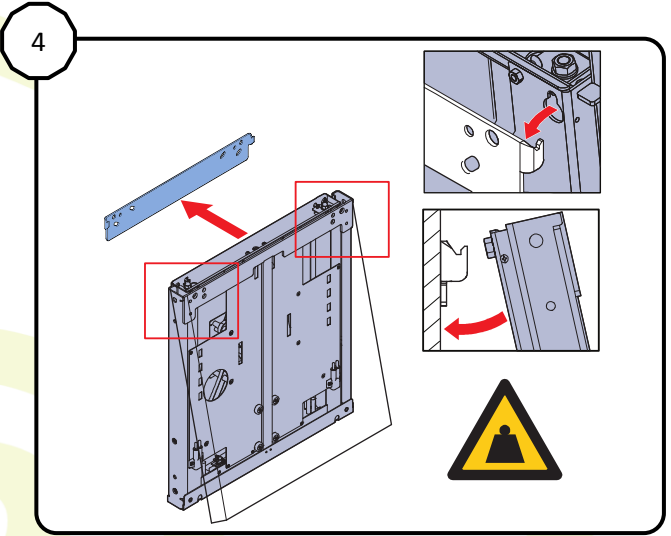
Contents of the box



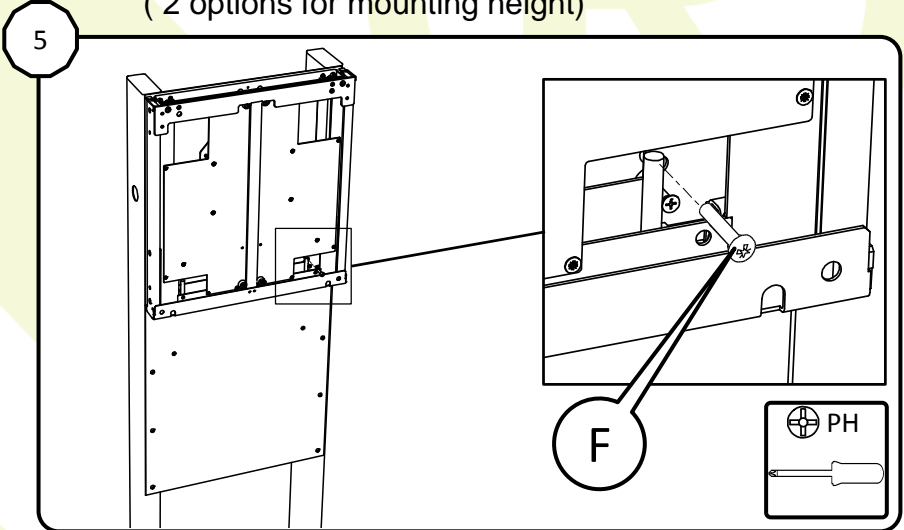
Assemble (● 10 mm)



Mount the BalanceBox® bracket  
( 2 options for mounting height)



Please refer to  
BalanceBox® user  
manual!



Lock BalanceBox® with safety screws at the bottom

